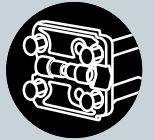


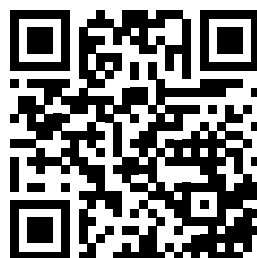


Hahn KT-N 6R / KT-V 6R

- D** Für Kunststofftüren
- F** Pour portes PVC
- GB** For PVC doors



Einbauanleitung · Notice de montage · Installation instructions

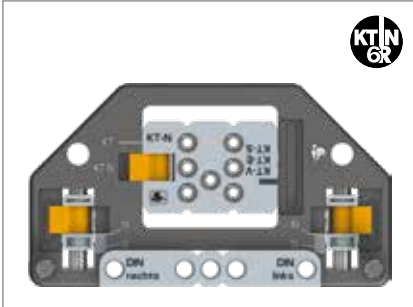


Alle Dr. Hahn
Anleitungen jetzt
als APP erhältlich:
[www.dr-hahn.eu/
anleitungen](http://www.dr-hahn.eu/anleitungen)



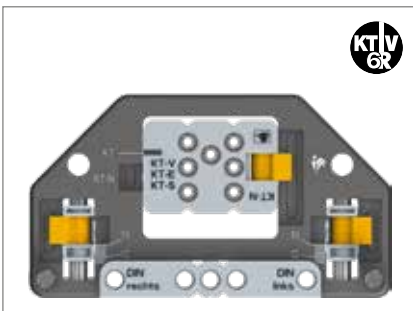
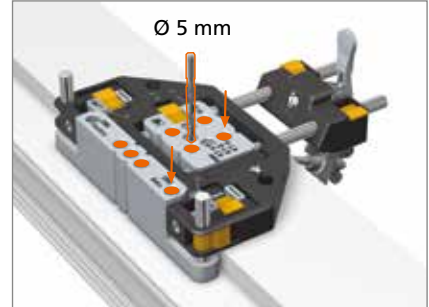


Bohrlehre (Darstellung DIN links) · Gabarit de perçage (Illustration pose à gauche) · Drilling jig (Pictured DIN left)



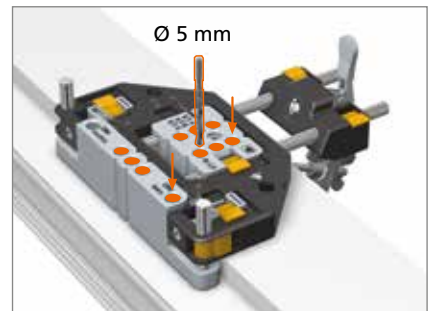
Bohrlehre mit Spanner
 Gabarit de perçage avec levier de serrage
 Drilling jig with tensioner
 Art.-Nr./No. d'article/Item no.: **T316A0001**

Bohrlehre ohne Spanner
 Gabarit de perçage sans levier de serrage
 Drilling jig without tensioner
 Art.-Nr./No. d'article/Item no.: **T316A0000**

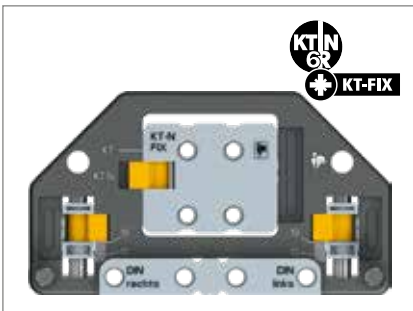


Bohrlehre mit Spanner
 Gabarit de perçage avec levier de serrage
 Drilling jig with tensioner
 Art.-Nr./No. d'article/Item no.: **T315A0001**

Bohrlehre ohne Spanner
 Gabarit de perçage sans levier de serrage
 Drilling jig without tensioner
 Art.-Nr./No. d'article/Item no.: **T315A0000**

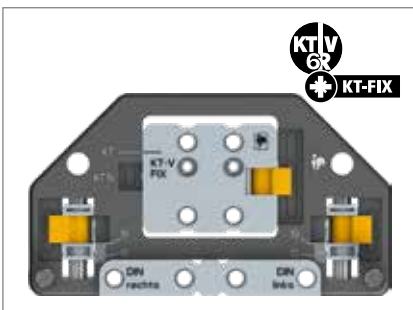
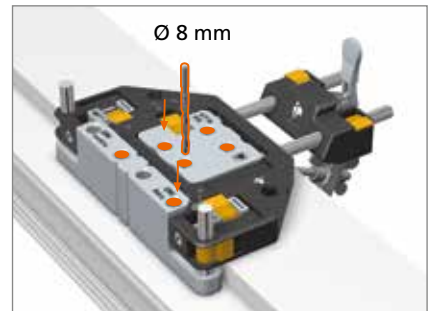


Bohrlehre (Darstellung DIN links) · Gabarit de perçage (Illustration pose à gauche) · Drilling jig (Pictured DIN left)



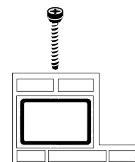
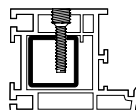
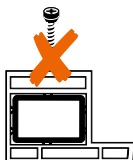
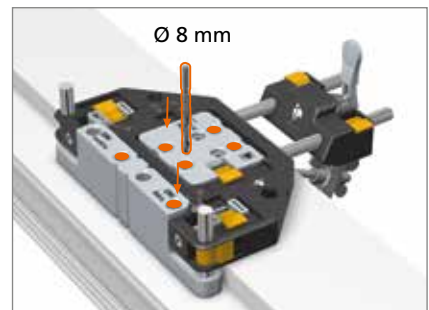
Bohrlehre mit Spanner
 Gabarit de perçage avec levier de serrage
 Drilling jig with tensioner
 Art.-Nr./No. d'article/Item no.: **T316A0F03**

Bohrlehre ohne Spanner
 Gabarit de perçage sans levier de serrage
 Drilling jig without tensioner
 Art.-Nr./No. d'article/Item no.: **T316A0F02**



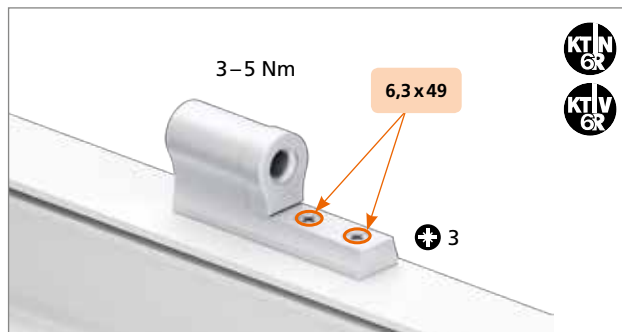
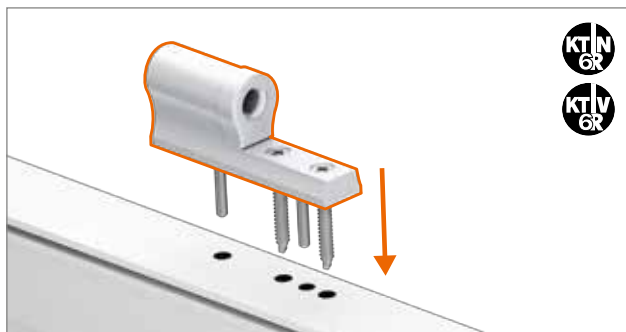
Bohrlehre mit Spanner
 Gabarit de perçage avec levier de serrage
 Drilling jig with tensioner
 Art.-Nr./No. d'article/Item no.: **T315A0F03**

Bohrlehre ohne Spanner
 Gabarit de perçage sans levier de serrage
 Drilling jig without tensioner
 Art.-Nr./No. d'article/Item no.: **T315A0F02**

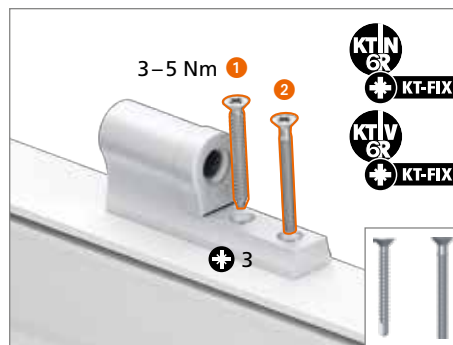
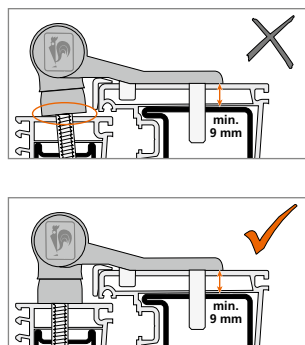
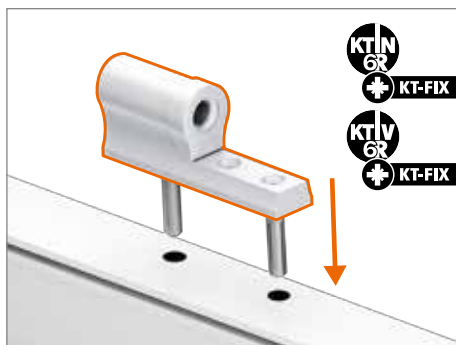




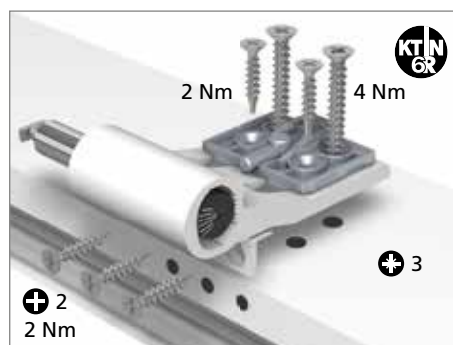
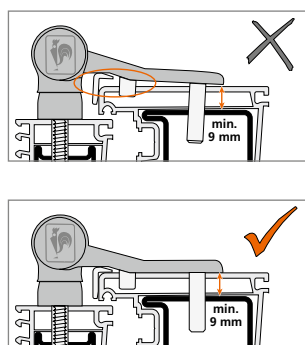
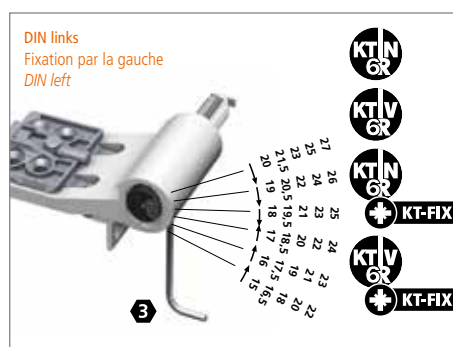
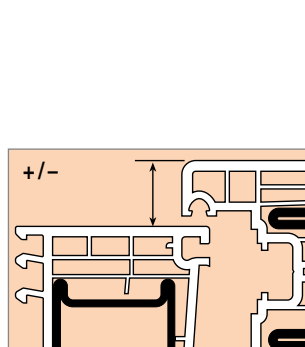
Rahmenbandteil montieren · Montage de l'élément dormant · Installing the hinge part for frame



Rahmenbandteil montieren · Montage de l'élément dormant · Installing the hinge part for frame

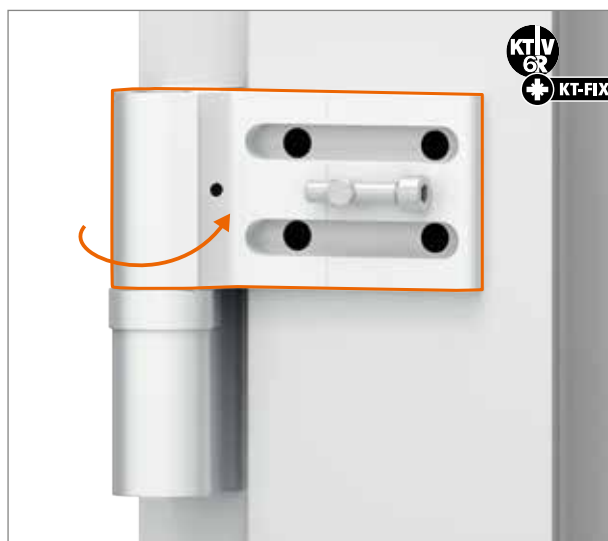
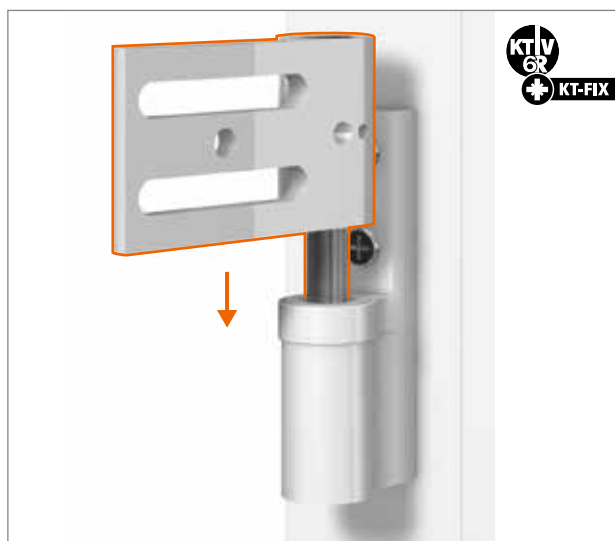
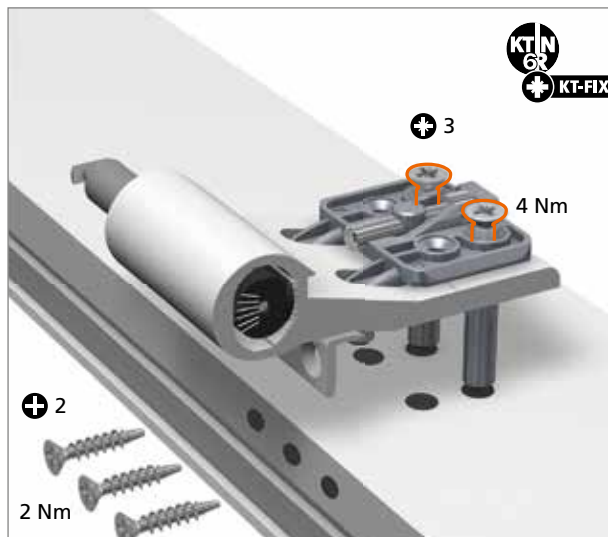


Flügelbandteil montieren · Montage de l'élément ouvrant · Assembling the sash part of the hinge



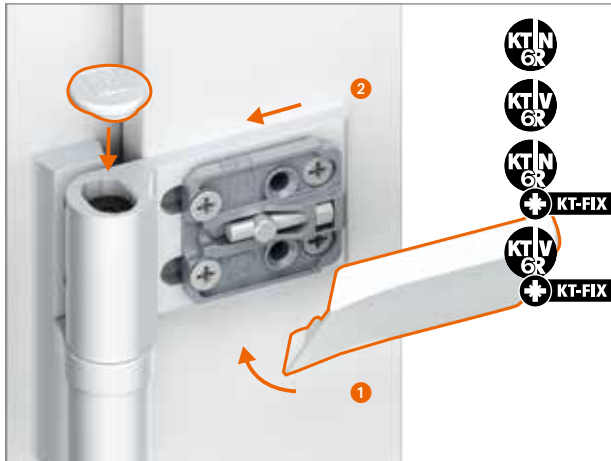


Flügelbandteil montieren · Montage de l'élément ouvrant · Assembling the sash part of the hinge

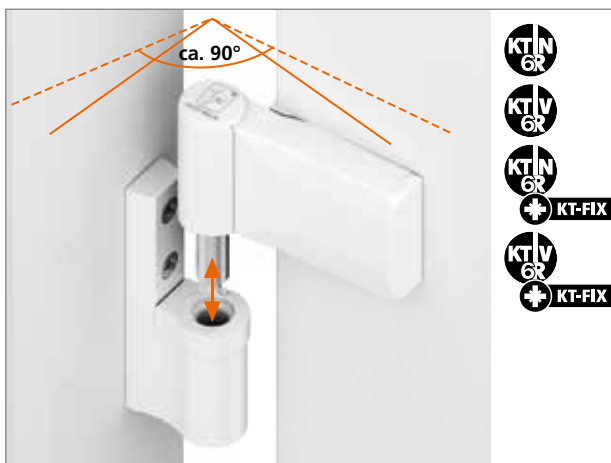




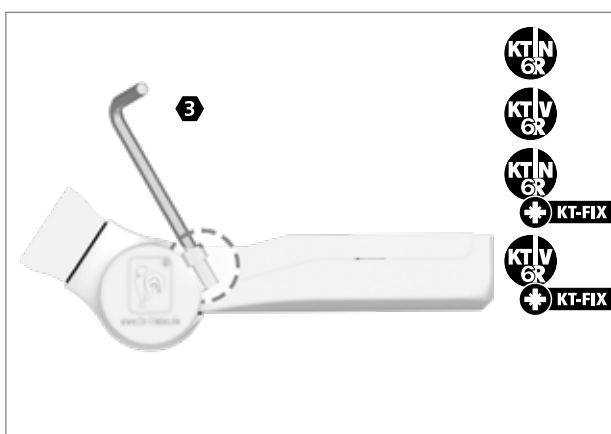
Flügelbandteil montieren · Montage de l'élément ouvrant · Assembling the sash part of the hinge



Ein- und Aushängen der Tür · Gondage et dégondage de la porte · Mounting and removing the door



Sicherung bei nach außen öffnenden Türen · Anti-effraction intégrée pour portes ouvrant vers l'extérieur · Protection of hinge cover for doors opening outwards



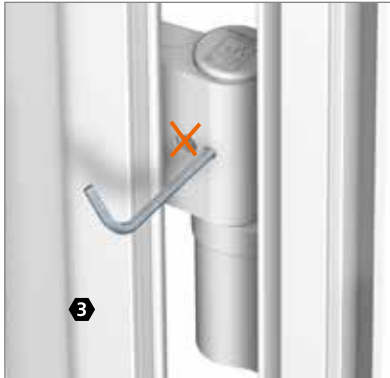
Einstellanleitung
Notice de réglage
Adjustment instructions

Verstellung der Bänder nur durch im
 Türenbau erfahrene Fachhandwerker.

Réglage et montage des paumelles
 uniquement par des professionnels qualifiés.

Adjustment and regulation only to be
 done by an experienced tradesman.

Dichtungsdruck einstellen · Réglage en continu de la compression du joint · Adjusting the sealing pressure

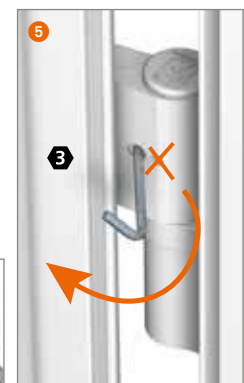
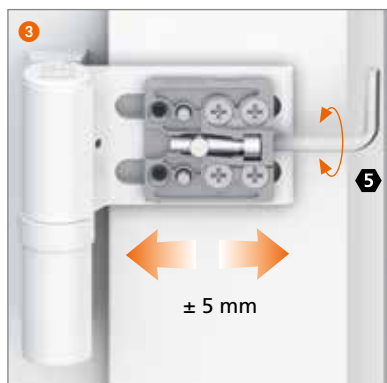
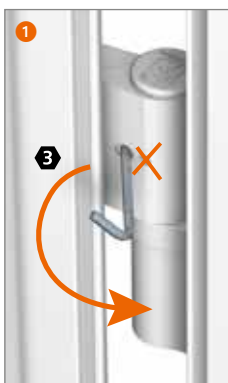


Veränderung des Dichtungsdrucks
 innerhalb des Aufdeckbereichs plus
 beidseitig 0,5 mm Reserve.

Modification de la compression du joint
 dans la plage de recouvrement avec 0,5 mm
 de réserve en plus dans chaque direction.

Changing the sealing pressure within
 the upstand dimension plus 0.5 mm reserve
 on both sides.

Horizontalverstellung · Réglage horizontal · Horizontal adjustment



Höhenverstellung · Réglage en hauteur · Height adjustment



Achtung:

unteres Band soll tragen, obere Bänder nur nachstellen.

Attention :

La paumelle inférieure doit porter; effectuez le réglage sur cette
 paumelle et réajustez seulement les paumelles supérieures, si nécessaire.

Caution:

The bottom hinge should bear the weight, only readjust the top hinge.

Lagerbuchse aus wartungsfreiem teflonhaltigen Kunststoff
 – keinesfalls schmieren!

Douille en matière plastique à teneur en téflon ne requérant aucun
 entretien – ne graisser en aucun cas !

Bearing bushes made of maintenance-free PVC containing Teflon
 – do not lubricate!

